



**Vocal Auditions - Female**

# It's A Business

Freely

BAMBI: Bambi.

CARMEN:



I've ne-ver been known as one of those stu-pid clucks, E-laine. Who

BAMBI: Bambi!



pis - ses a - way a lot of her hard earned bucks, — El-aine. But

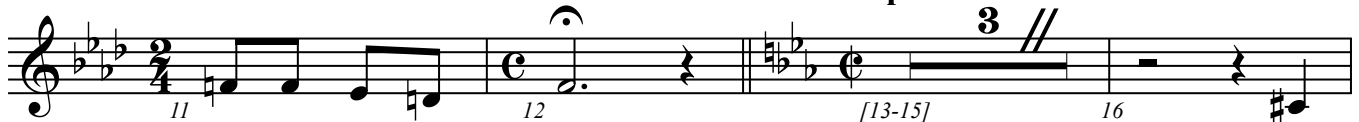


fac - ing the fact your col - or - a - tur - a sucks, Bam - bi! Though it



breaks your mo - thers heart, For - get a - bout the part. It's time for you to know Why I

A Tempo -- Coarse Strut



real - ly backed this show. [13-15] 16 You



asked me for my mot - ives Well, you need - n't be so smart. — It's a



bus - 'ness. It is - n't mak - ing his - to - ry — It



is - n't mak - ing art, — It's a bus - 'ness. Shaw and



Ib - sen, Take 'em a - way. — And don't bo - ther me with Mol - iere, Those



Rus - sian's ne - ver pay.

# Thinking of Him

4

25 *3* 26 27 *3* 28

Think - ing of him. Think - ing of him.

29 *3* 30 *3* *3* 31 *3*

Tell - ing the truth When no - bo - dy's will - ing to tell him the truth.

32 *3* 33 34 *3*

Fight - ing for him. Liv - ing for him,

35 *3* 36 *3* 37

Think - ing it ov - er That's what I think I do. Well,

38 *3* 39 40 *3* 41

is - n't it time? Is - n't it high time I was

42 *3* 43 44 45

think - ing of me, too?

## Thataway

(Cue from last measure of #12)

GEORGIA:

Freely

He made a get - a - way. He left me flat a - way. At times like

this a mo - dern miss should gal - lop that - a - way. When love goes this - a - way,

Don't blow your bliss a - way. you might find out he's just a - bout a hug and kiss a - way.

**poco piu mosso**

No mat - ter which - a - way He takes that bitch a - way, I won't re -

lent till he'll con - sent to make a switch - a - way.

GEORGIA:

If he's in Par - a - guay,

or ev - en Man - da - lay, I'll grab my horse and set my course to reach him

**poco piu mosso**

that - a - way. I've known a man or two, A score or

more it's true, And if he stays or if he strays de - pends on my las - soo. *rit.* It

**Ad Lib****Dictated**

ain't just how you woo 'em, but how you pro - ceed to pur - sue 'em.

# A Tough Act to Follow

22

59 NIKI: *a tempo* 60 61 62 63

Musical notation for the song 'A Tough Act to Follow'. It features a single staff in 4/4 time with a key signature of two flats (Bb and Eb). The melody starts at measure 59 with a quarter rest, followed by a quarter note G4, a quarter note A4, and a quarter note Bb4. Measure 60 contains a quarter note C5, a quarter note Bb4, and a quarter note A4. Measure 61 contains a quarter note G4, a quarter note F4, and a quarter note E4. Measure 62 contains a quarter note D4, a quarter note C4, and a quarter note B3. Measure 63 contains a quarter note A3, a quarter note G3, and a quarter note F3. The piece ends with a double bar line.

We'd be a tough act to fol - low, a tough act to fol - low I

SEGUE TO DANCE

# A Tough Act to Follow Dance

22A

Direct Segue from 22

NIKI:

Musical notation for the dance 'A Tough Act to Follow Dance'. It features a single staff in 4/4 time with a key signature of two sharps (F# and C#). The melody starts with a quarter note G4, followed by a quarter note A4, and a quarter note B4. The piece ends with a double bar line.

know.

*In The Same Boat #1*

9

**Perky** **GEORGIA, BAMBI, NIKI:**

In the same boat, On the same sea, Shak-in' in-side as the

tide keeps ris - in'. Nar - y a ship, Nar - y a sail, Nar - y a soul on the

whole ho - ri - zon. Still, we are not dis - cour - aged Due to the an - cient

quote That you're like - ly to win Take it all on the chin When you're in the same

boat.